

Sontex

■ Thermal Energy ■ Flow Metering ■



Supercom of Sontex – The complete bi-directional Radio System



Supercom Selling Arguments

Supercom - Radio remote reading

- 15 years of experience with bi-directional radio technology
- Complete solution for remote reading
- Successful and reliable solution for an excellent value for money
- 365 days radio stand by, up to 14 hours a day
- Most meters can be configured by radio
- bi-directional radio - No redundant radio load – no electro smog – environmental and user friendly
- The devices are only transmitting by radio by request.

Supercom - Radio remote reading

- Wide reliable radio range: 30 m in buildings, 3-5 floors (Record: 12 floors)
- Same radio system for walk-by or concentrator – no exchange of meters necessary
- Radio network expandable with repeaters
- The serial number is the radio address whereby each meter is identified and the traceability is granted.

Supercom Radio System

Supercom - Radio remote reading

- Frequency: 433,82 MHz
- Power: 10 mW
- Technology: FM band
- Mode: FSK, bi-directional
- All data are stored in XML format for the highest possible flexibility for data processing

Product portfolio radio Walk-By



Supercom

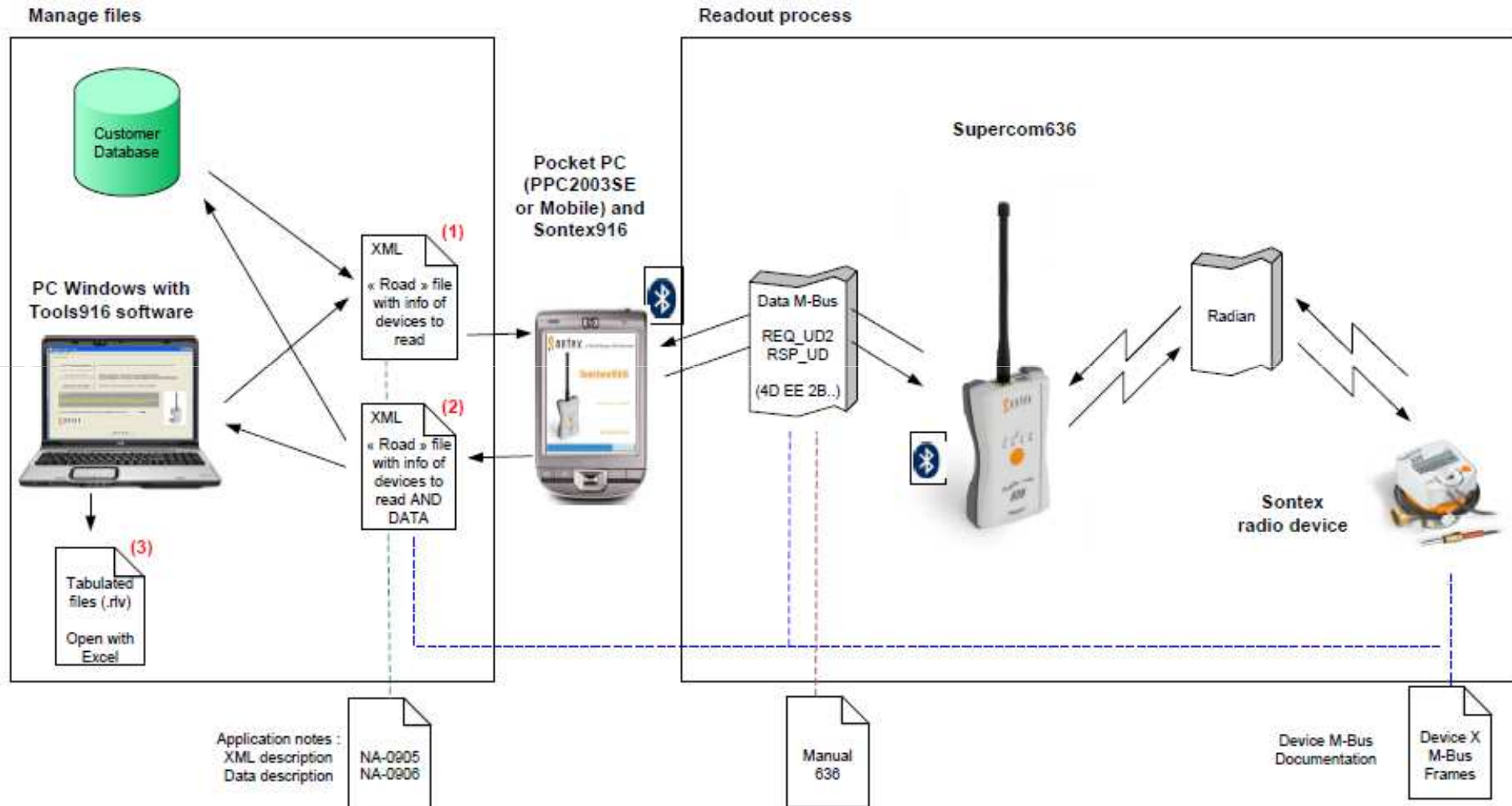
Peripheral products

Remote reading with mobile radio solution (Walk-by)

- Case modem radio Supercom 636
 - Modem radio Supercom 636 interface Bluetooth
 - SW Pocket PC Sontex916 for readout
 - SW PC Tools916 to create, edit, convert reading routes
 - SW PC Tools636 for modem firmware update
 - USB cable for charging and update FW modem
 - Charger 230 / 12 V
 - Driver USB
 - Manuals



Reading Concept



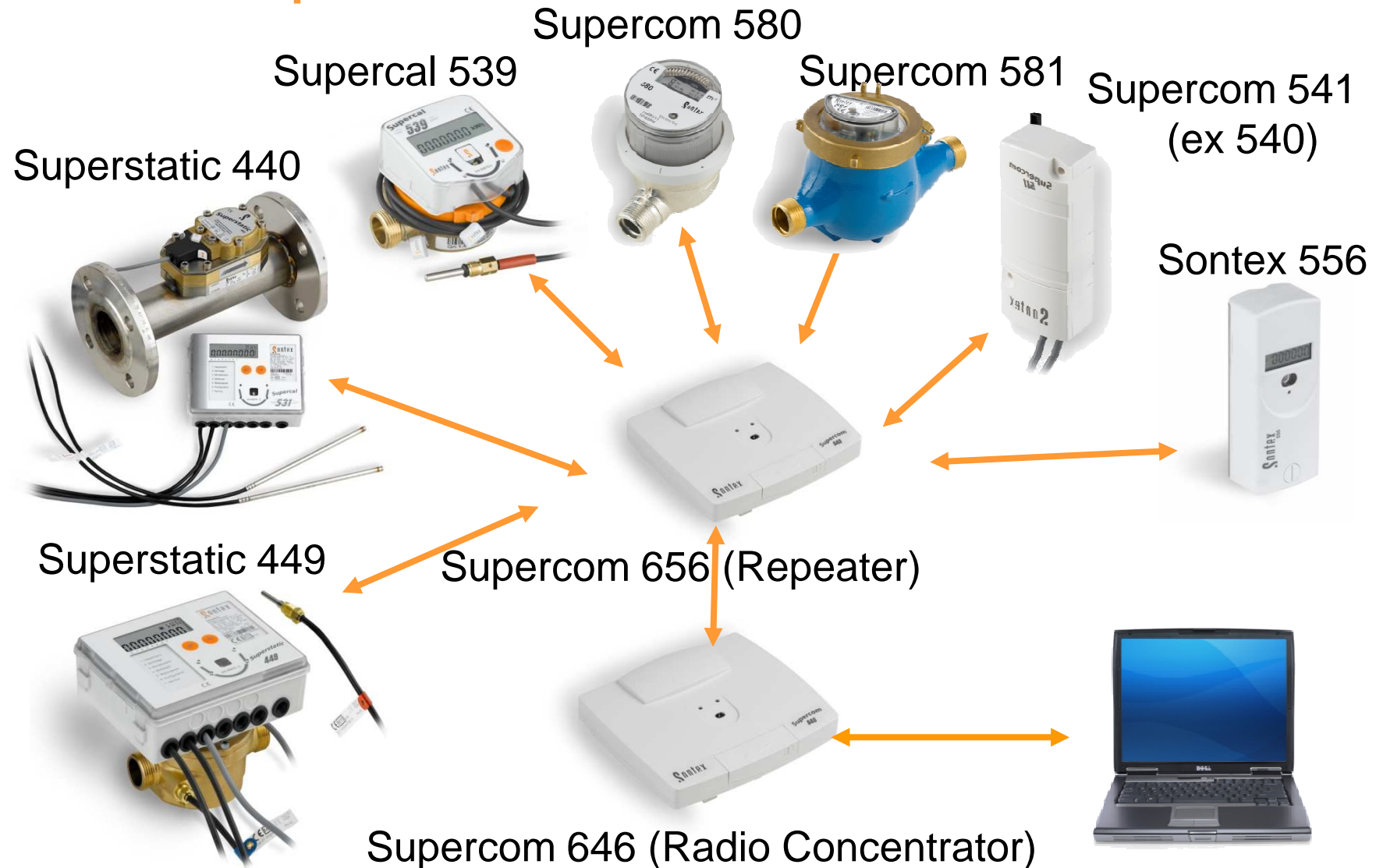
(1) « Road » file could be created in the Sontex916 software it self, in the Tools916 on PC or directly by the database.

This file contains : list of the devices to read with their device type and radio address.

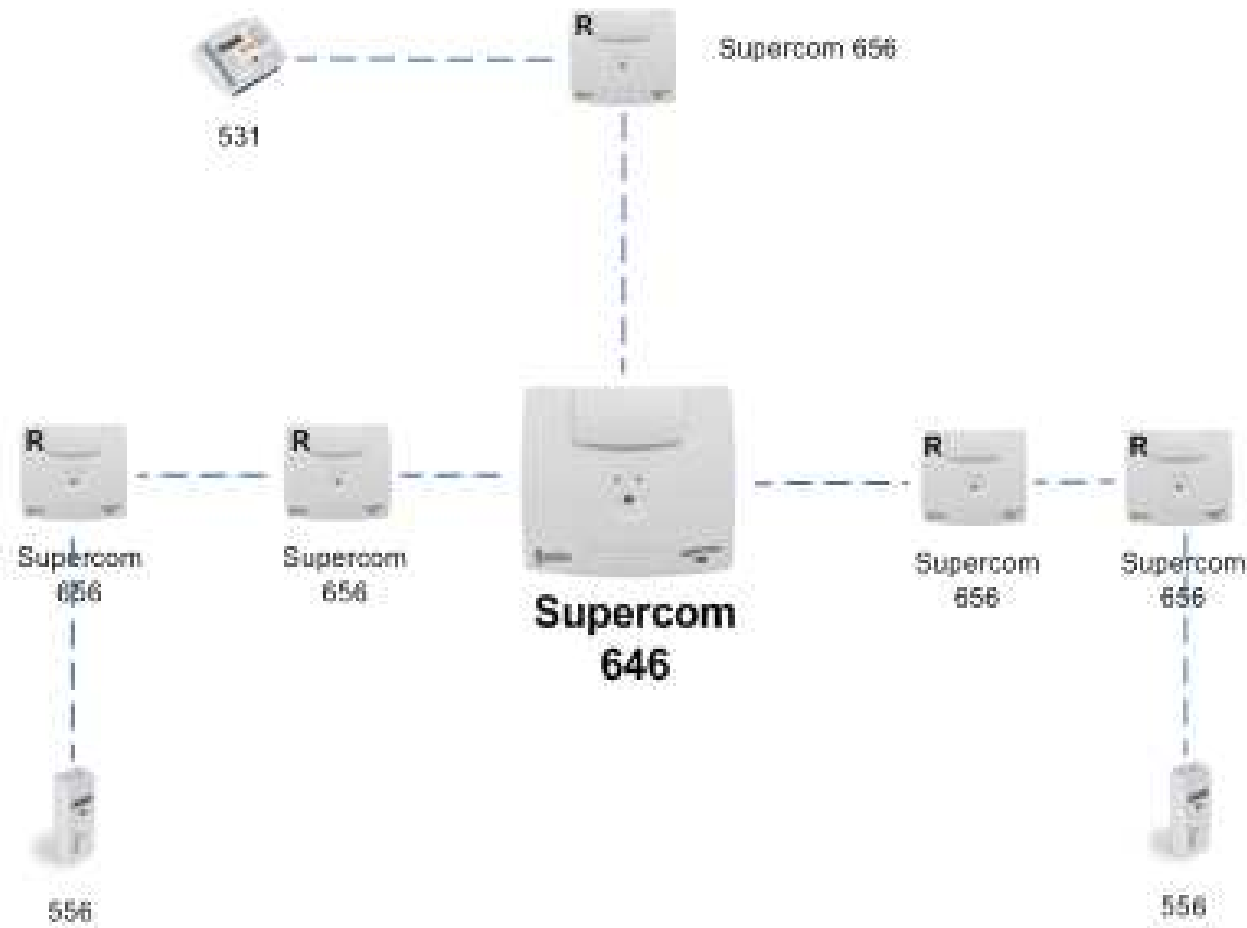
(2) After the readout done with the Pocket PC, the device data are saved in the « Road » file in the « Data » tag in XML. The data could be directly integrated in database.

(3) This XML file could be converted using the Tools916 software on PC to generated tabulated text files that could be opened with Excel.

Product portfolio radio concentrator



Radio Concentrator with Repeater



Peripheral products

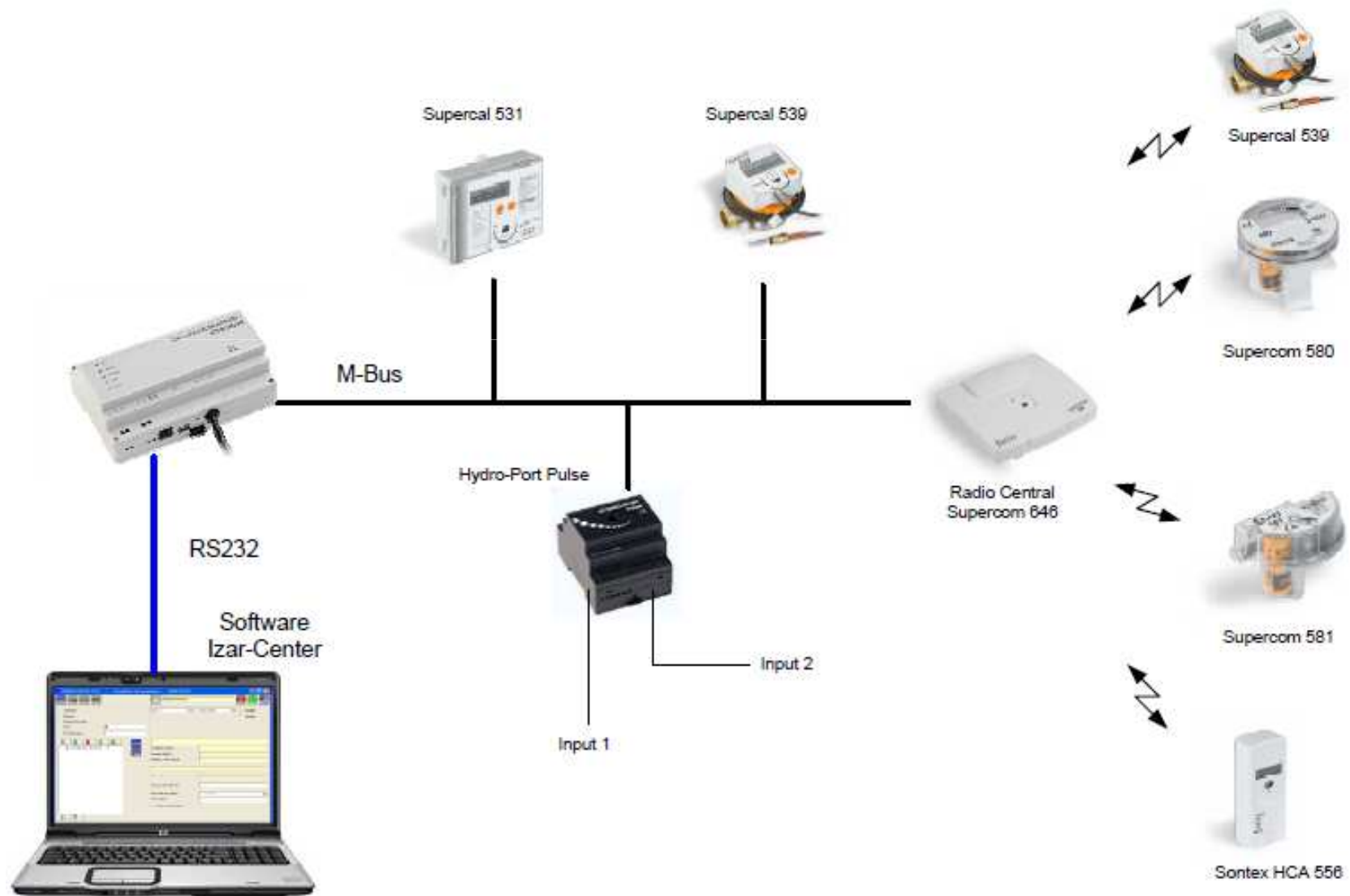
Remote reading solution with radio concentrator

- Concentrator Supercom 646
 - SW PC Tools646 to configure, creating reading lists
 - Mounting on DIN rail or with screws
 - Optical interface and/or USB / RS-232
 - GSM module (230 V), M-Bus, GPRS
 - Repeater, six times cascadable

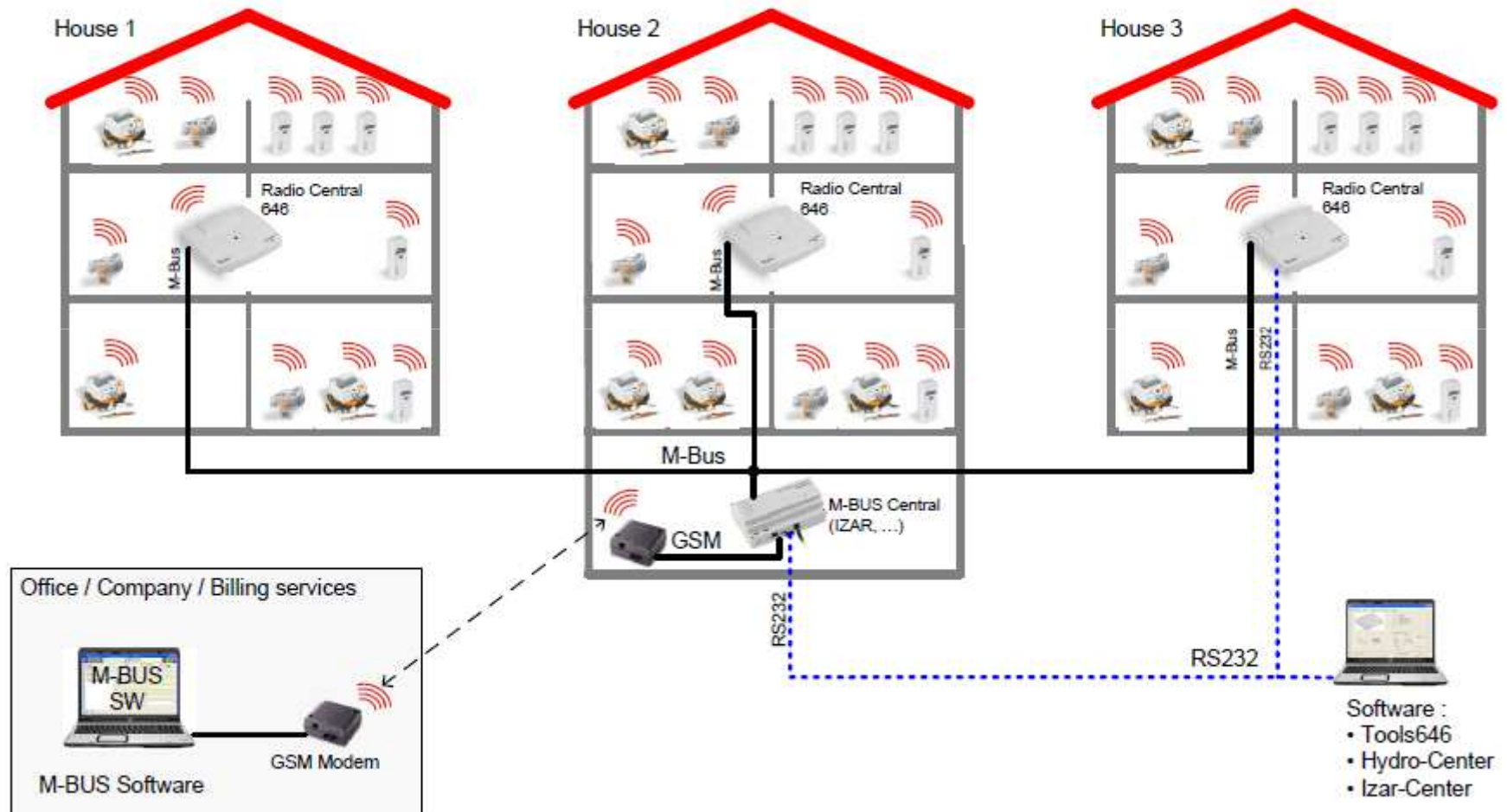


Supercom Possibilities

Integration in M-Bus Network

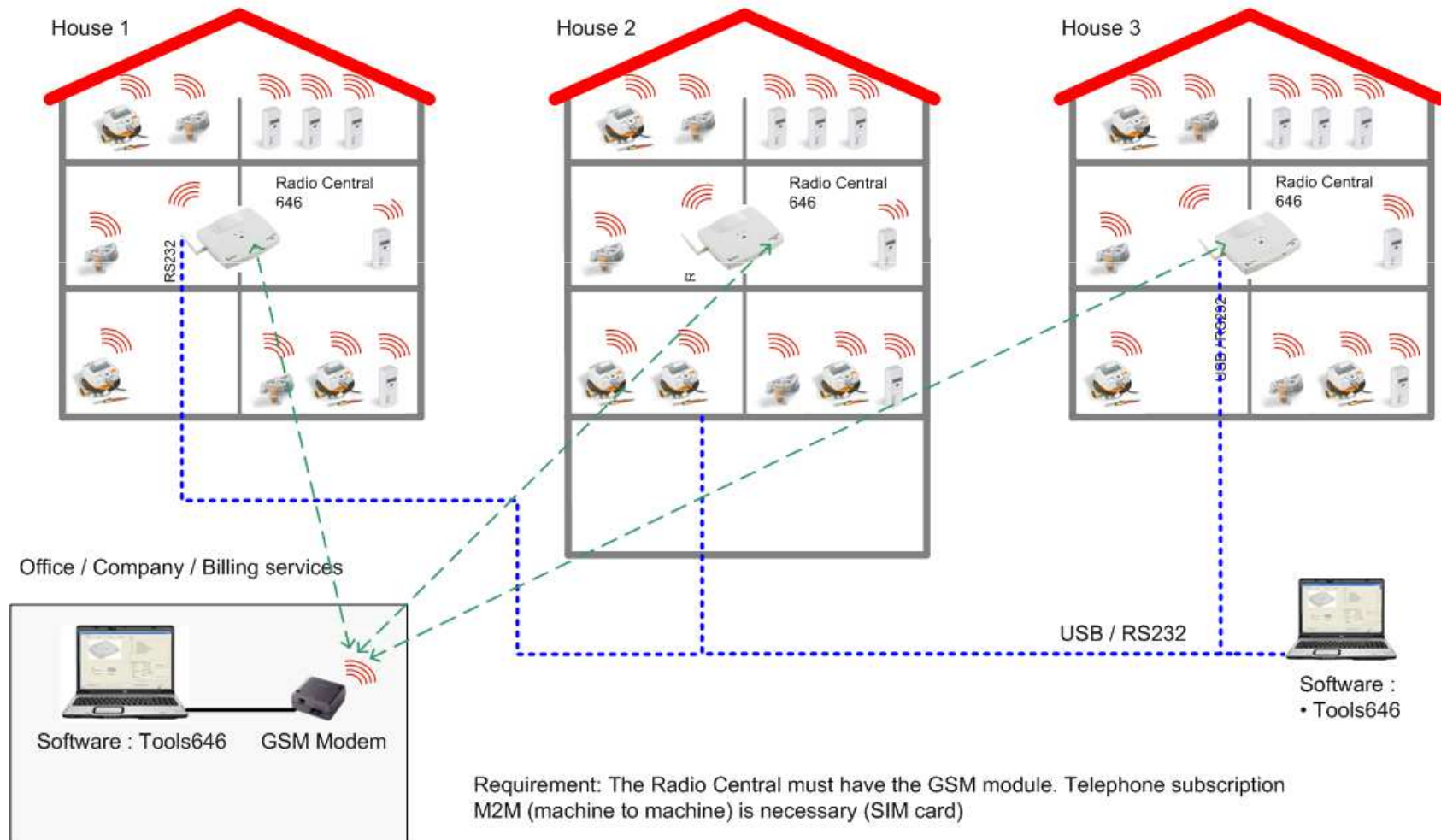


Integration in M-Bus Network



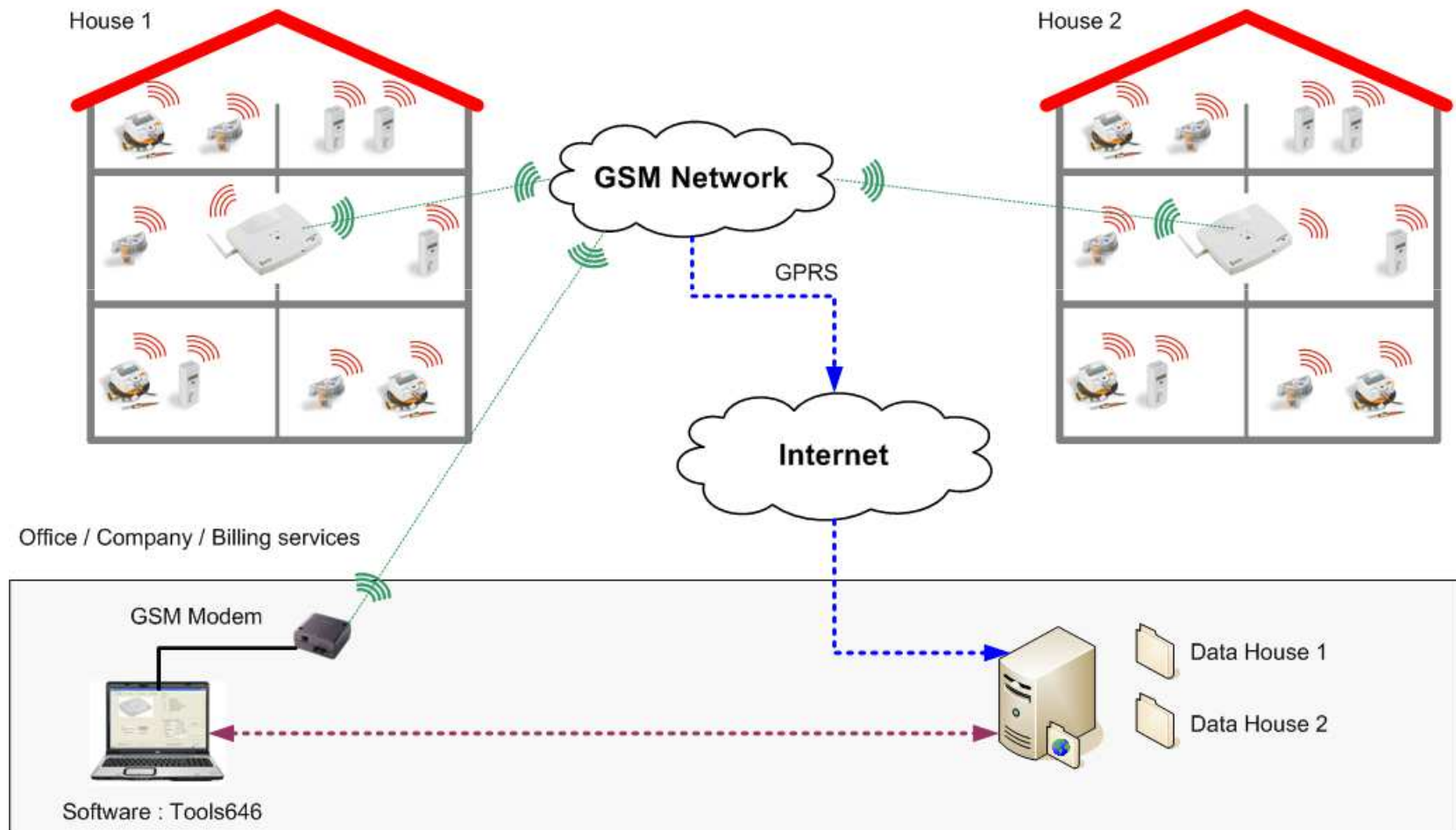
Integration in GSM/GPRS Network

Radio demonstration



Integration in GSM/GPRS Network

Requirements : Radio central 646 are equipped with GSM/GPRS module and a GPRS subscription



Supercom References

Reading in difficult environment

- Rail way station Lausanne, Switzerland: Environment with various electromagnetic interferences.
Lausanne: Seat of IOC and the Olympic Museum



Reliable pit radio remote reading



Even the competition is using Supercom

- Frische Zentrum Frankfurt, Germany: Whole sale fresh market
150 Superstatic 440 Radio ,Cooling application with Temper 20
billing service done by Techem

<http://www.frische-zentrum-frankfurt.de>



Project for 3000 GPRS concentrators

NeoWeb

DAS KUNDENPORTAL FÜR IHRE
HEIZ- UND NEBENKOSTENABRECHNUNG



NeoVac



Useful Informations

Remote reading versus manual reading

- The consumer data can be read out on a monthly basis, or a defined frequency, without notice
- Efficient and quick control possible
- Flexible solution in terms of investment of manpower and time
- Lower operating cost despite higher initial cost: Short pay back
- Less manpower needed
- No error reading
- Quick and efficient customer support based on reliable electronic data

Remote reading versus manual reading

- Doesn't depend on the presence of the tenant
- No access to the apartments necessary
- Correct billing possible at any time – independent of change of tenant or tariff

Mobile reading versus fixed reading

- Inexpensive and immediately operational – no in-house installation necessary
- Can be retrofitted any time with a fixed central radio unit without changing the setup.



Questions & Answers





THANK YOU FOR YOUR ATTENTION!

Sontex ■ Thermal Energy ■ Flow Metering ■