

WATER METER – CYLINDRICAL PISTON METER COMPOSITE



- Cylindrical piston meter for cold water
- Nominal flow rate Q_3 2,5 – 4 m³/h (MID)
- Installation in horizontal or vertical position
- Low starting flow rate
- Low pressure loss
- Modularis totalizer, retrofittable with Modularis AMR modules

A NEW GENERATION OF PRECISION: THE WEHRLE CYLINDRICAL PISTON METER COMPOSITE

The new Cylindrical Piston Meter COMPOSITE for cold water is convincing by highest measuring accuracy, solid processing quality and robustness.

The special thermoplastic material meets the highest standards in technical quality and is designed for long-term use.

The low starting flow rate of 2 litres/hour ensures measurement of the smallest amounts of water. Its highly precise measuring characteristic guarantees long-lasting reliability and efficiency.

The Cylindrical Piston Meter COMPOSITE is perfectly prepared for modern meter communication with its serially equipped Modularis totalizer. Using this intelligent solution, integration into any AMR or Smart Metering system is not only simple but also realizable at any later date.

The Cylindrical Piston Meter COMPOSITE is available in different lengths, with various thread connections and can be installed either horizontally or vertically. Totalizer and protective cover can be labelled individually on customer request. The maximum pressure load is 16 MPa.



THE DECISIVE ADVANTAGES AT A GLANCE



- Accuracy of measurement based on the volumetric principle
- Light, robust and compact
- Long-lasting product life due to the use of top quality materials
- Modularis totalizer, retrofittable with different Modularis AMR modules enabling integration into any remote reading system
- Protection of totalizer by separation of wet and dry areas
- Installation in any position possible (except "overhead")
- Conventional impeller-wheel meters, used in vertical pipes (ascending/descending), can easily be replaced by the WEHRLE Cylindrical Piston Meter COMPOSITE

Cylindrical piston meter with pulse module/
M-BUS-Module



Can be retrofitted with the following electronic modules:

- Modularis pulse generator, S0 DIN 43864 or reed-compatible
- Modularis M-BUS in accordance with EN 1434-3
- Protection class IP 68

Cylindrical piston meter with radio module



Can be retrofitted with the following electronic modules:

- Modularis radio, frequency band 868 MHz or 433 MHz
- Protection class IP 68

The WEHRLE Cylindrical Piston Meter COMPOSITE meets the following standards or, respectively has the following certificates:

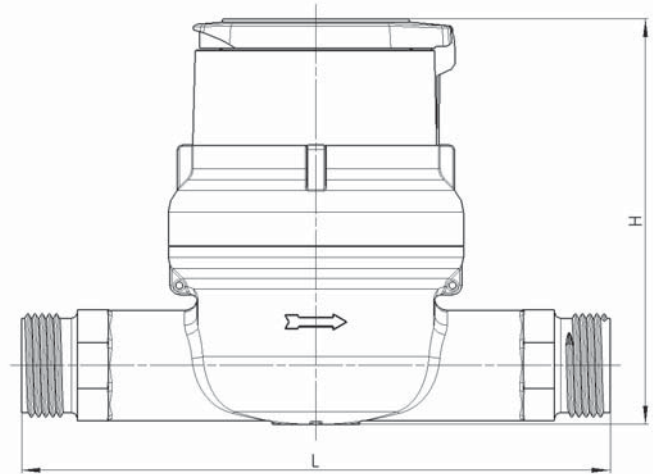
- MID – Measuring Instruments Directive 2004/22/EC of the European Parliament
- European Standard EN 14154 – 2007 for water meters

- Recommendation OIML R49 for water meters, designated for measuring cold drinking water
- International Standard ISO 4064 for cold drinking water meters
- KTW approval (Germany)
- ACS approval (France)

TECHNICAL DATA

Product description

RTK – ... = Cylindrical piston meter
 ... – HYX = Cylindrical piston meter
 Horizontal body,
 Modularis totalizer

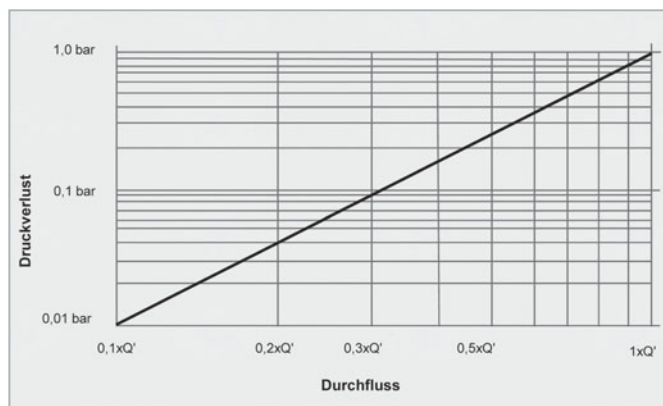


Dimensional drawings of the meter

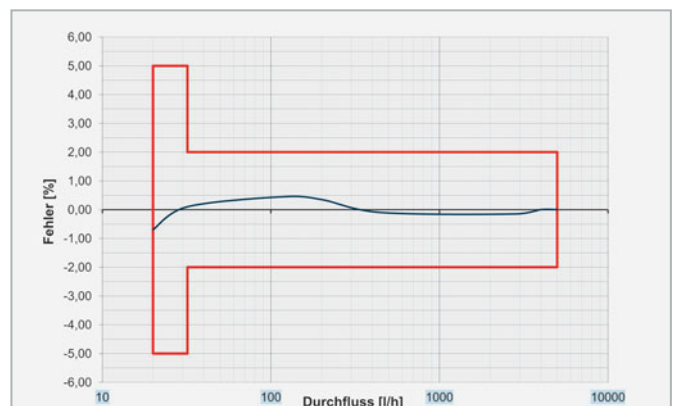
Overall length L (mm)*	170	190	190
Nominal flow Q_3	2,5	2,5	4
Nominal width (mm)	15	20	20
Starting flow rate approx. (l/h)**	2	2	2
Flow Q at 1 bar pressure loss (l/h) approx.	5.100	6.400	6.400
Connecting thread	3/4"	1"	1"
Height H approx. (mm)	129	129	129
Height H approx. with radio module (mm)	143	143	143
Weight approx. (kg)	0,55	0,59	0,59
Maximum water temperature (°C)	T30	T30	T30
Q_3/Q_1 ratios			
Flow range Q_3/Q_1 (Approval up to)	R315H/R315V	R315H/R315V	R500H/R500V
Flow range Q_3/Q_1 (Serial Standard)*	R200H/R200V	R200H/R200V	R250H/R250V

* Additional overall lengths and/or Q_3/Q_1 ratios available on request (in preparation: 105 mm, 110 mm, 115 mm, 145 mm, 165 mm, 175 mm)

** Typical values



Pressure loss graph



Typical accuracy curve